


Tutorial 2 Basic Colour Grouping (version 4.0 or better)

1. Read to open floral.pcx from the "Tutorial Images" Folder.

(d:\cd\Tutorial
images\floral.pcx)


Click on the "Extract Colour"

Tool (eyedropper)  to check how many colours are in this scanned image. In this scan there are 155 unique colours.



We need to reduce those 155 colours to just 3 colours.



2. Click on the "Group Colours"  icon.



3. Select the "Smooth" tool  to blend the colours in the image ready for Colour Grouping.


[Note 1: the greater the Level of smoothness, the more blurred the image.]

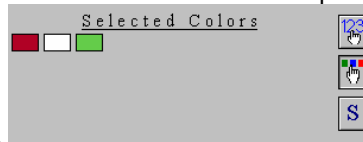
It's best to start with Level 1  and increase the smoothness by increments of 1 if required. In this instance we will use Level 2. Click the up arrow to Level 2 and click the Go  button.

[Note 2: Smoothing is also useful for removing the hexagonal artefacts from a scanned magazine image]



4. Zoom in to the framed image at Zoom Level 7  .
(Click on Zoom 7 , move your cursor to the Scanned Image and click down to effect the zoom)

5. Click the “Colour Group” icon  again and select the 3 colours comprising the design.



In this case a Red a White and a Green.

6. Click the Go button .

All but the 3 colours you chose should now be gone.

Your image should look like the following:



You have now reduced the colours of this image from 155 to 3, That is, you have **Colour Grouped** the image.

Alternate Colour Grouping Method

Colour Grouping Method 2

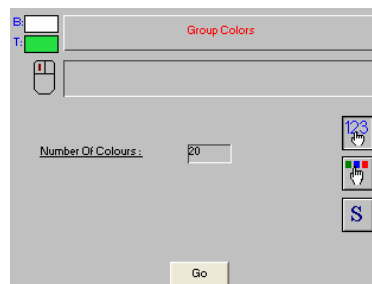
The steps below will illustrate how to use this tool to reduce the amount of colours that are in the image.

1. As a first step, use the Extraction Tool, :

Click on the “Extract Colour” (eyedropper) Tool  to check how many colours are in this scanned image. In this scan there are 155 unique colours. We need to reduce those 155 colours to just 3 colours.

2. Next click on the top sub-menu icon “Group by Number of Colours” 

3. Decide a number to group to:



Type the number of colours that the image should be grouped to.

Reduce the number at a gradual pace, eg down to 100, then 50 then 30.

Once you get down to 15 colours, you'll see if you're getting the correct result.