

Matching Colours in Print-outs between Graphics Editors and CM32, Studio and Fabric Toolbox

To finish with **exactly** the same colours printing from Photoshop, Corel Photo paint, or in fact ANY other Windows Graphics Application, you must use the Windows ICM feature (Microsoft's ColorSync Mac equivalent – written by the same company) in all Colour Printers' preferences. This allows the User to use any colour in any application (Corel Draw, Adobe Photoshop & Illustrator require more manipulation – see below*) and have it print EXACTLY THE SAME from any application on the same PC. If you switch on ICM you can print an image from ANY other program and it will print the same colours in one application as another.

Activation of ICM in Printer Settings:

To be found in the Printing Preferences of each Printer

In Canon Printers look for Color Adjustment

Check Manual

Click "Set" and change to ICM.

i. Matching Colours in Print-outs between Corel Draw X3 and CM32, Studio and Fabric Toolbox .

1. Go to Tools/Color Management
2. Change "Color Mode" to RGB
3. Change "Generic Profile" to Colormatch RGB

ii. Matching Colours in Print-outs between Adobe Photoshop/Illustrator and CM32, Studio and Fabric Toolbox .

To activate ICM in Adobe Photoshop & Illustrator, go to Edit/Color Settings, click Advanced Mode....

and follow the setup on the images below (CS1&2, CS3&up).

It's not 100% accurate, as it used to be in Photoshop 7 or earlier versions, but its pretty close.

To activate ICM in Illustrator, go to Edit/Color Settings, click Advanced Mode.... and follow the same setup as used in Photoshop.

Note: Make sure you **set your Preferences to RGB Color** not CMYK

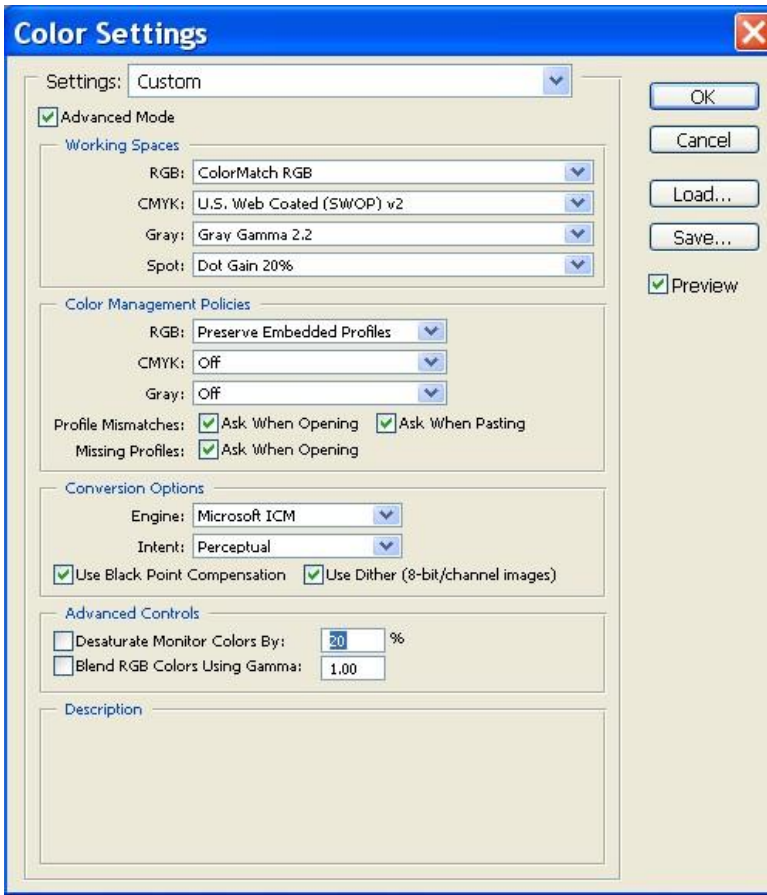


Image 1 – Adobe Photoshop CS1

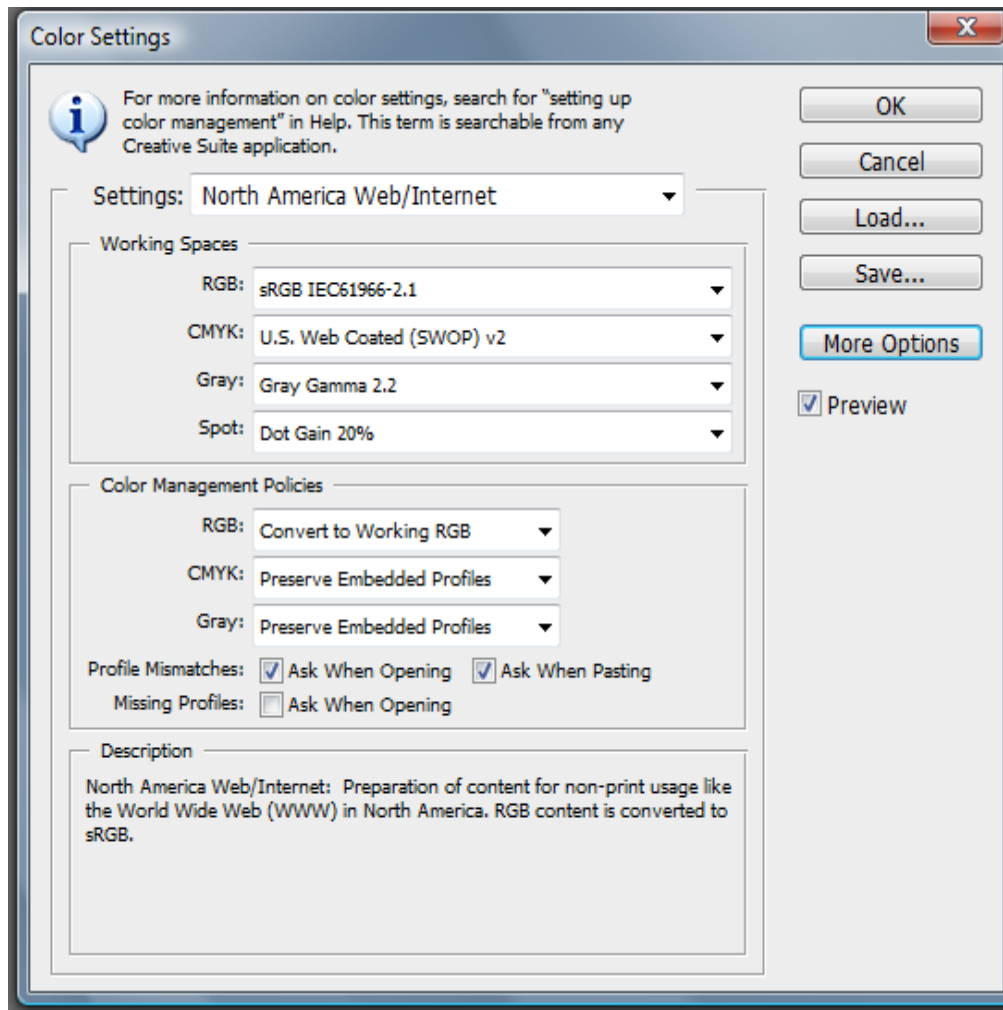


Image 2 – Adobe Photoshop CS3 & up
Click the **More Options** button

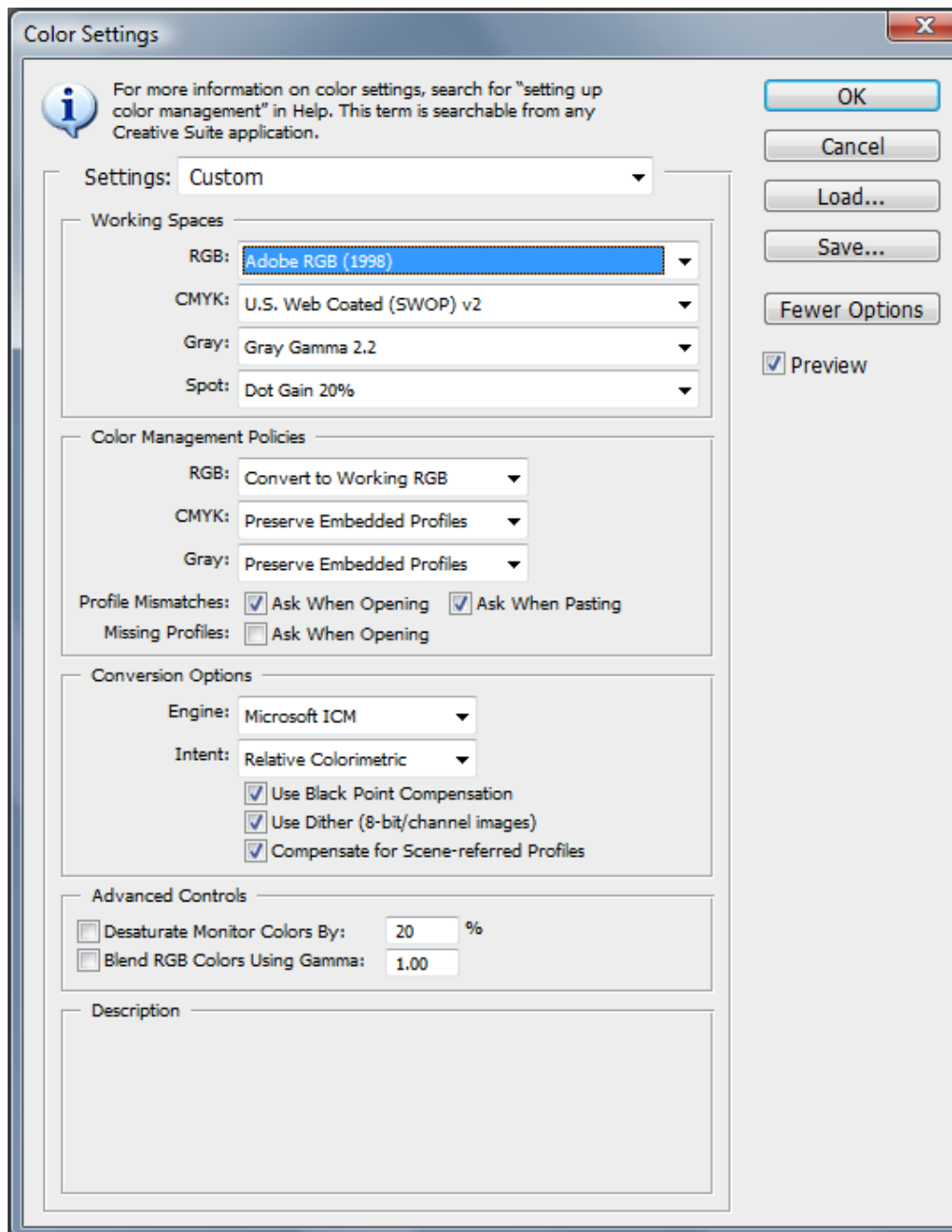


Image 3 – Adobe Photoshop CS3 & up
Make changes exactly as above for best results